

Session Name: 11-2-2017 7-19 PM

Date Created: 11/2/2017 5:45:35 PM

Active Participants: 36 of 36

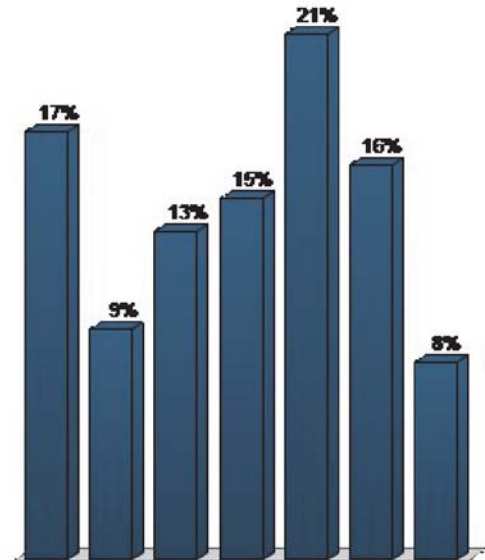
Average Score: 0.00%

Questions: 12

## Results by Question

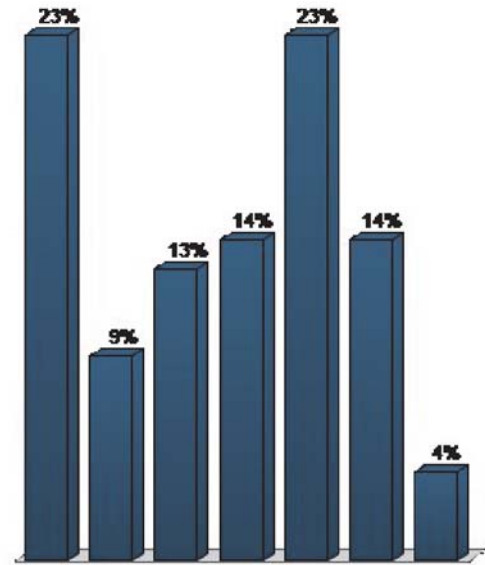
### 1. Which of these Goals Are The Highest Priority?(Choose 3) (Multiple Choice - Multiple Response)

	Responses	
	Percent	Count
Innovative Downtown Parking Management Plan?	17.33%	13
Support Renovation of Historic Neighborhoods?	9.33%	7
Multimodal Connectivity Citywide?	13.33%	10
Celebrate Arts, Culture and History?	14.67%	11
Elevate Downtown's Vitality and Appeal?	21.33%	16
Quality Development Standards?	16%	12
Other?	8%	6
<b>Totals</b>	<b>100%</b>	<b>75</b>



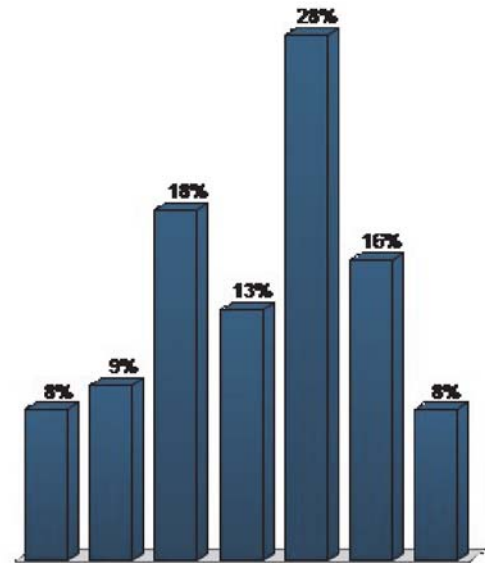
2. Which of these Goals Are The Highest Priority?(Choose 3) (Multiple Choice - Multiple Response)

	Responses	
	Percent	Count
Innovative Downtown Parking Management Plan?	23.08%	18
Support Renovation of Historic Neighborhoods?	8.97%	7
Multimodal Connectivity Citywide?	12.82%	10
Celebrate Arts, Culture and History?	14.1%	11
Elevate Downtown's Vitality and Appeal?	23.08%	18
Quality Development Standards?	14.1%	11
Other?	3.85%	3
<b>Totals</b>	<b>100%</b>	<b>78</b>



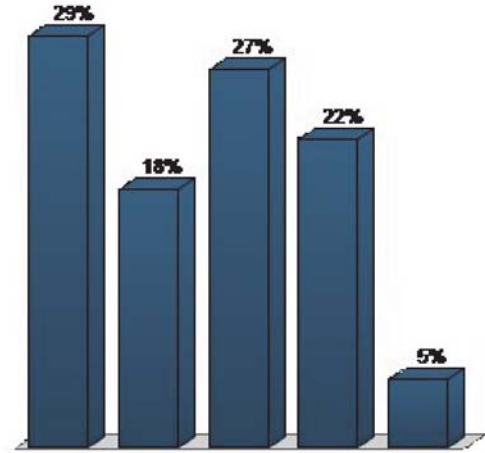
**3. Which Plans or Policies are the Highest Priority?(Choose 3) (Multiple Choice - Multiple Response)**

	Responses	
	Percent	Count
Innovative Downtown Parking Management Plan?	7.89%	6
Support Renovation of Historic Neighborhoods?	9.21%	7
Multimodal Connectivity Citywide?	18.42%	14
Celebrate Arts, Culture and History?	13.16%	10
Elevate Downtown's Vitality and Appeal?	27.63%	21
Quality Development Standards?	15.79%	12
Other?	7.89%	6
<b>Totals</b>	<b>100%</b>	<b>76</b>



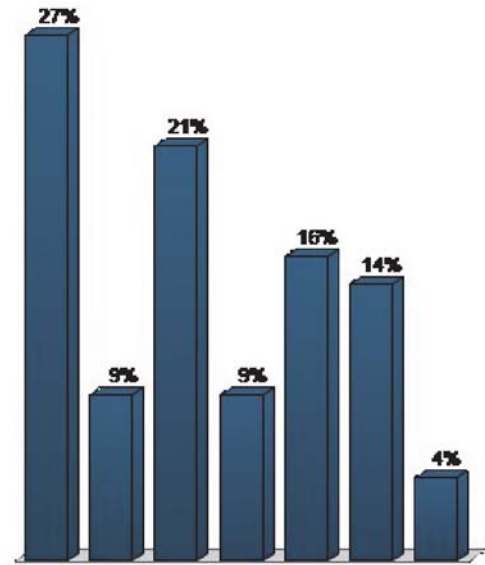
**4. Which Goals are the Highest Priority?(Choose 3) (Multiple Choice - Multiple Response)**

	Responses	
	Percent	Count
Accessible / Well Maintained Parks and Open Space?	28.92%	24
Protect Surrounding Scenic Rural and Ag Landscape?	18.07%	15
Implement Green Infrastructure Citywide?	26.51%	22
Adopt Green Building and Maintenance Standards?	21.69%	18
Other?	4.82%	4
<b>Totals</b>	<b>100%</b>	<b>83</b>



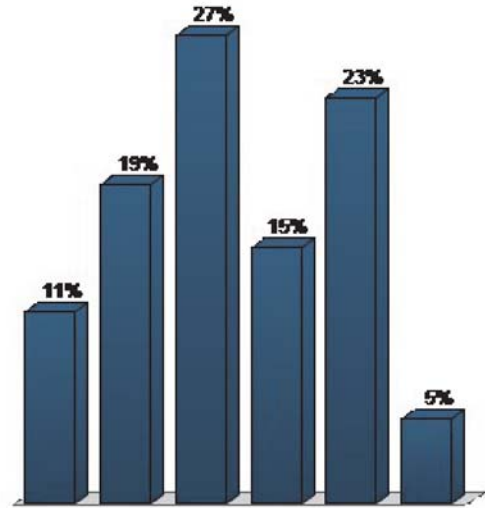
**5. Which Plans or Policies are the Highest Priority?(Choose 3) (Multiple Choice - Multiple Response)**

	Responses	
	Percent	Count
Implement Park Master Plan?	27.14%	19
Rural and Ag Zoning Codes and Standards?	8.57%	6
Scenic Corridors Master Plan?	21.43%	15
Conservation Easements / TDRs / PDRs?	8.57%	6
Downtown Urban Forestry Master Plan?	15.71%	11
Low Impact / Environmental Design Regulations?	14.29%	10
Other?	4.29%	3
<b>Totals</b>	<b>100%</b>	<b>70</b>



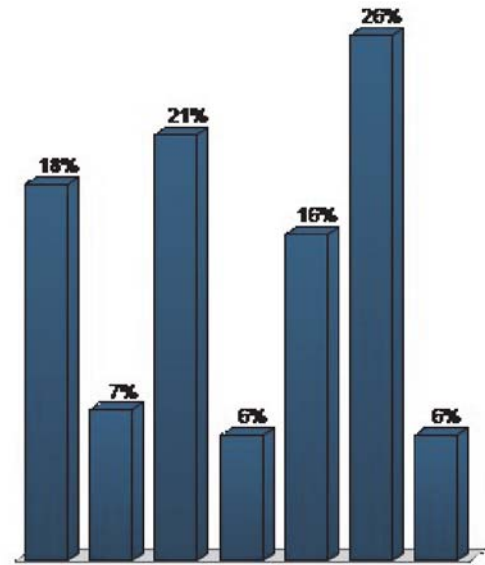
**6. Which Goals are the Highest Priority?(Rank in Order of Preference) (Multiple Choice - Multiple Response)**

Responses		
	Percent	Count
Entertainment Venue Master Plan?	11.11%	9
Affordable Housing Policy and Guidelines?	18.52%	15
Economic Development Opportunity Sites MP?	27.16%	22
Bristol Motor Speedway Master Plan?	14.81%	12
Events Master Plan?	23.46%	19
Other?	4.94%	4
<b>Totals</b>	<b>100%</b>	<b>81</b>



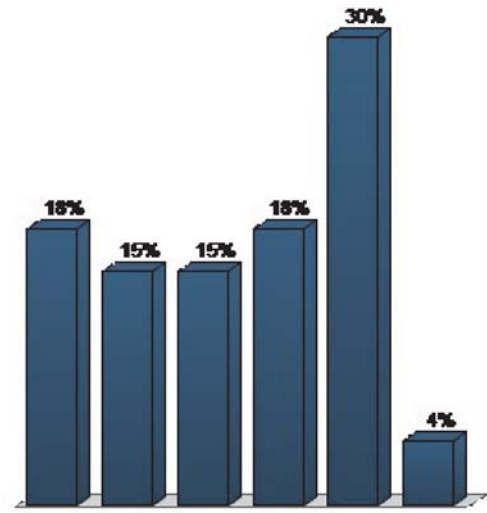
7. Which Goals are the Highest Priority?(Choose 3) (Multiple Choice - Multiple Response)

	Responses	
	Percent	Count
Support Systems and Services to Address Homeless?	18.29%	15
Improve quality and integration of Public Housing?	7.32%	6
Reduce Addiction by Community Participation?	20.73%	17
Fair / Equal Investments For All Neighborhoods?	6.1%	5
Meet the Needs of Aging Population?	15.85%	13
Expand and Improve All Educational Opportunities?	25.61%	21
Other?	6.1%	5
<b>Totals</b>	<b>100%</b>	<b>82</b>



**8. Which Plans and Policies are the Highest Priority?(Choose 3) (Multiple Choice - Multiple Response)**

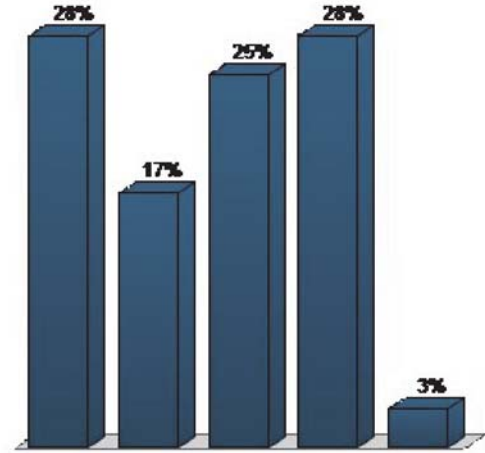
	Responses	
	Percent	Count
Pubic Housing Plan and Policy?	17.81%	13
Neighborhood Needs Analysis?	15.07%	11
Neighborhood Plans and Fiscal Policies?	15.07%	11
Aging Population Plan?	17.81%	13
Public School Renovation Plan?	30.14%	22
Other?	4.11%	3
<b>Totals</b>	<b>100%</b>	<b>73</b>





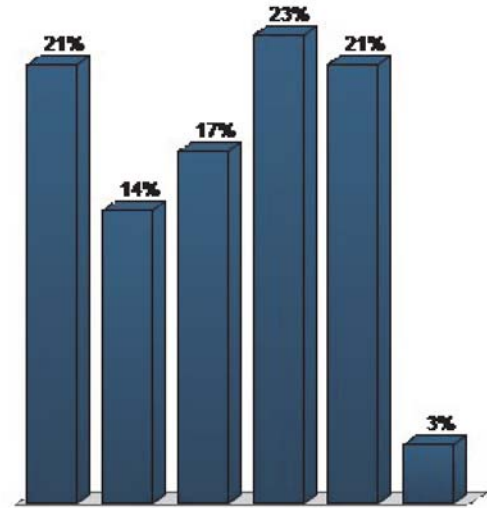
9. Which Goals are the Highest Priority?(Choose 3) (Multiple Choice - Multiple Response)

	Responses	
	Percent	Count
Infrastructure and Programs for Health / Wellness?	27.63%	21
Multi-use Aquatic Center in Central Location?	17.11%	13
Neighborhood Access to Healthy Food Choices?	25%	19
Reduce Drug Dependency and Addiction?	27.63%	21
Other?	2.63%	2
<b>Totals</b>	<b>100%</b>	<b>76</b>



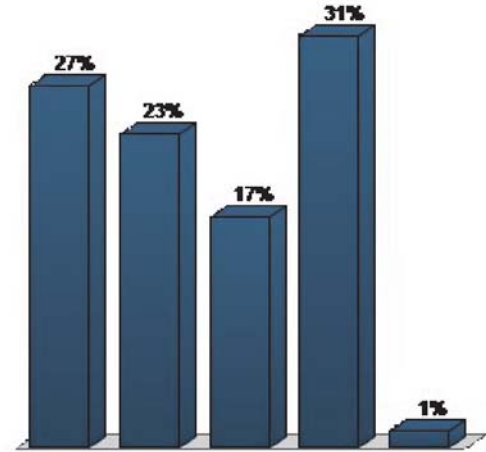
**10. Which Plans and Policies are the Highest Priority?(Choose 3) (Multiple Choice - Multiple Response)**

	Responses	
	Percent	Count
Citywide Healthy Eating Master Plan?	21.43%	15
Aquatic Center Master Plan?	14.29%	10
Codes / Ordinances to Allow Urban Agriculture?	17.14%	12
Establish and Fund Community Drug Coalition?	22.86%	16
Safe Routes to School for All Schools?	21.43%	15
Other	2.86%	2
<b>Totals</b>	<b>100%</b>	<b>70</b>



11. Which Goals are the Highest Priority?(Choose 3) (Multiple Choice - Multiple Response)

	Responses	
	Percent	Count
Accessible Regional Transit Options?	27.16%	22
Link Regional Greenways and Recreation Assets?	23.46%	19
Coordinate Land Use / Environmental Protection?	17.28%	14
Improve Regional Collaboration to Promote Region?	30.86%	25
Other	1.23%	1
<b>Totals</b>	<b>100%</b>	<b>81</b>



**12. Which Plans and Policies are the Highest Priority?(Choose 3) (Multiple Choice - Multiple Response)**

	Responses	
	Percent	Count
Regional Greenways Master Plan?	10.26%	8
Regional Public Transportation Plan?	24.36%	19
Regional Economic Development Plan?	30.77%	24
Regional Conservation and Land Use Plan?	7.69%	6
Regional Branding and Promotion Plan?	16.67%	13
Update to Ignite Plan?	8.97%	7
Other?	1.28%	1
<b>Totals</b>	<b>100%</b>	<b>78</b>

